



Tobishima Village

How to Dispose of Domestic Trash

Inquiries: Health and Environment Division,
Tobishima Village Office

☎0567-52-1001

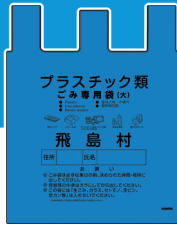
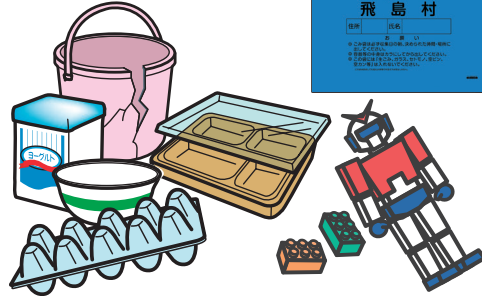
Please obey the rules when putting out your trash. Trash that has not been properly separated will not be collected.

Burnable Trash Every Monday and Friday



Kitchen waste, paper waste, wood scraps, sneakers, etc.

Plastic Every Wednesday



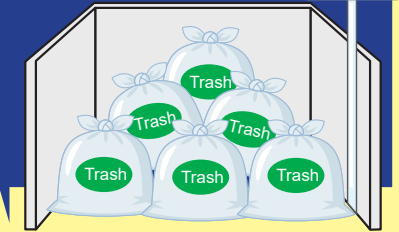
Plastic containers, toys, plastic models, polystyrene foam, etc.

Non-burnable Trash 2nd and 4th Saturday of every month



Glass, china and ceramics, umbrellas, metal items, etc.

Please place these categories of trash out at the garbage collection point by the morning of the correct day.

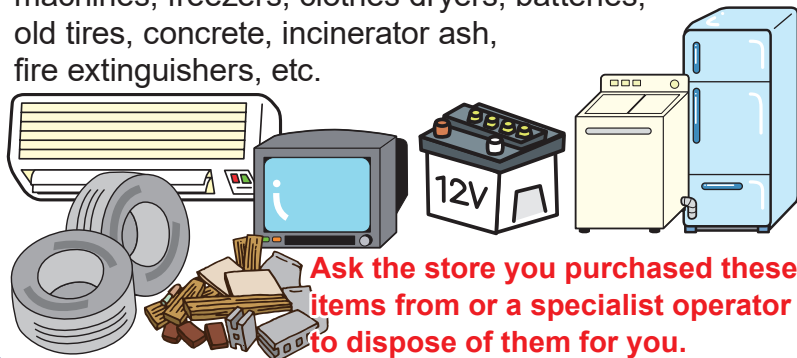


Be sure to place your trash only in the bags specified by Tobishima Village Office

Garbage bags can be purchased from convenience stores, etc. in Tobishima Village.

Trash that is not collected

Air-conditioners, televisions, refrigerators, washing machines, freezers, clothes dryers, batteries, old tires, concrete, incinerator ash, fire extinguishers, etc.



Ask the store you purchased these items from or a specialist operator to dispose of them for you.

Drop recyclable resources off at the Eco Plaza

- Collection date and time (excluding year-end/New Year holidays)
Every **Tuesday, Thursday, and Saturday** 1:00 p.m. - 5:00 p.m.
Every **Sunday** 9:00 a.m. - 12:00 noon, 1:00 p.m. - 5:00 p.m.

- Items accepted for drop-off

Empty tins and cans, glass bottles, PET bottles, food trays

Rinse lightly first.

Newspapers, magazines, cardboard, clothing, dry batteries, fluorescent light tubes, etc.

